



GAT MONTHLY MEMBERSHIP PROGRESS REPORT

Results as of: 5/31/2024

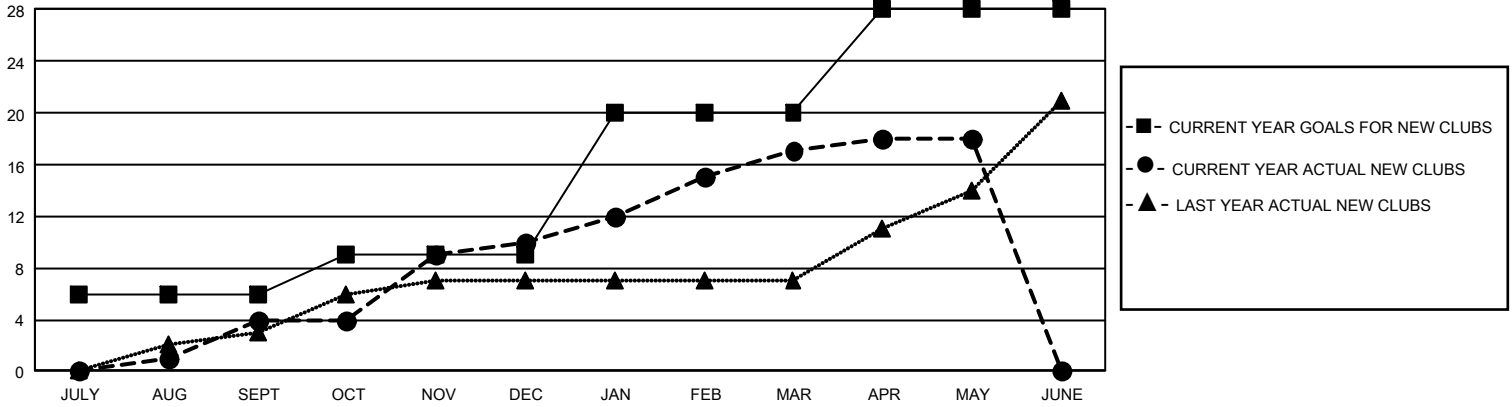
GMT Constitutional Area 3, Group D

REPORT DOES NOT INCLUDE CLUBS IN UNDISTRICTED AREAS.

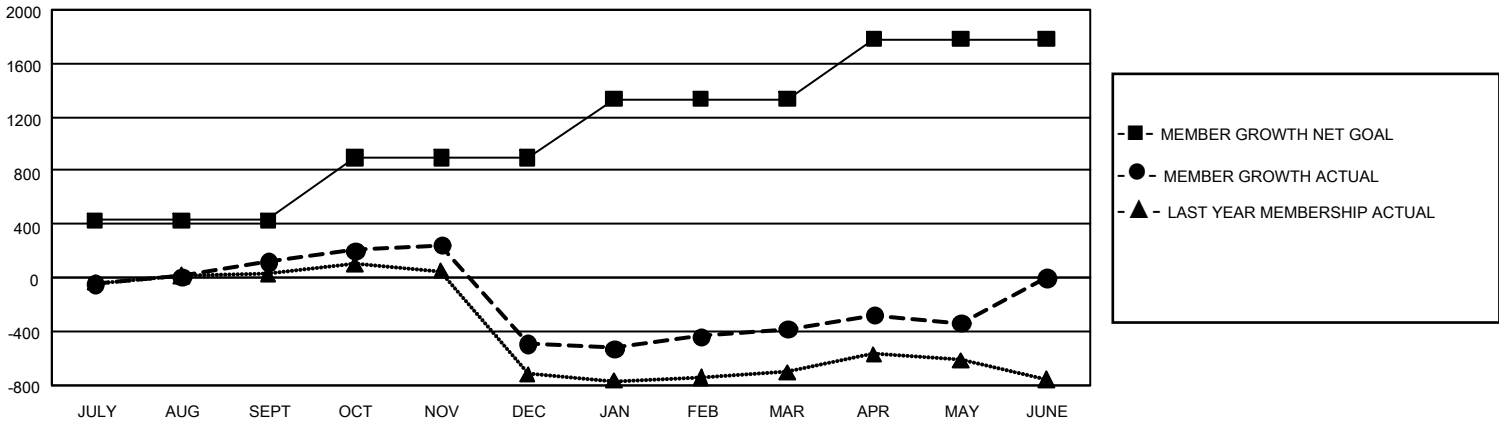
Clubs			
RESULTS FOR 2023-2024			
QUARTER	NEW CLUB GOAL	NEW CLUBS	DROPPED CLUBS
JULY/AUG/SEPT	18	4	5
OCT/NOV/DEC	9	6	7
JAN/FEB/MAR	33	7	8
APR/MAY/JUNE	24	1	1

Members			
RESULTS FOR 2023-2024			
QUARTER	MEMBER GROWTH NET GOAL	MEMBER GROWTH ACTUAL	DROPPED MEMBERS ACTUAL (including transfers)
JULY/AUG/SEPT	429	626	431
OCT/NOV/DEC	469	634	1,187
JAN/FEB/MAR	437	563	348
APR/MAY/JUNE	445	351	285

GOALS AND ACTUAL NEW CLUBS CUMULATIVE



GOALS AND ACTUAL MEMBERS CUMULATIVE



DROPPED CLUBS: 21	
DROPPED MEMBERS	
DECEASED	104
CLUB CANCELLED	228
OTHER	1,918
TOTAL	2,250

449 CLUBS OF 776 ADDED 1 OR MORE NEW MEMBERS

[CLICK HERE FOR CUMULATIVE MEMBERSHIP DATA](#)

GENDER DISTRIBUTION	
MALE	6,814 (45.74%)
FEMALE	8,081 (54.25%)
NON BINARY	1 (0.01%)
PREFER NOT TO ANSWER	1 (0.01%)
TOTAL FAMILY UNIT MEMBERS	5,036
FAMILY MEMBERS PAYING HALF DUES	2,873